

W. Berkshire
Music SINCE 1940
School



**ANNUAL REPORT
FY2021–2022**

MISSION AND VALUES

The mission of the Berkshire Music School is to foster the love and pursuit of music for all ages through quality music education activities, community collaborations, and performance opportunities.

Our Values

- Access for all: all ages, backgrounds, skill levels, interests, and financial resources
- Our excellent faculty and staff
- Early childhood exposure to music
- Lifelong learning opportunities
- Performance opportunities

We Offer

- Private & group lessons, ensembles, workshops, and classes
- Collaborations with area cultural organizations, social service agencies, and senior centers/residences
- Performances including in-house recitals, concerts and master classes, and offsite performances
- Gifted and experienced musicians and educators as faculty

LETTER FROM THE EXECUTIVE DIRECTOR

DEAR FRIENDS,

At the Berkshire Music School, fiscal year 2021-2022 was filled with lots of exciting events, performances, group classes, and of course, music lessons. BMS persevered through the challenges of the previous two years amongst the COVID-19 pandemic, staying true to our mission while introducing new artistic programming and performance opportunities to students aged one to 92. None of these exciting additions would have been possible without an engaged community and our generous supporters.



Berkshire Music School began the new fiscal year with our unforgettable 80th Anniversary Gala. Over 115 friends joined us safely in person to commemorate the legacy of our founder, enjoy the beautiful musicality of Emanuel Ax, and celebrate our newest scholarship in honor of previous Executive Director, Tracy Wilson. Throughout the year BMS welcomed seven new faculty members, each bringing a wide range of expertise for our students in private lessons and community group classes. BMS classes were offered on a pay-what-you-can basis and will continue to do so as we promote our vision of music for all: ages, skill levels, backgrounds, and financial resources. As the world began to reopen our Music @ The Taft performance series returned, bringing a wide variety of performances from our Global Voices Festival to outdoor children's concerts. How lucky I felt to hear our halls filled with the sound of music once more.

In the words of Hans Christian Andersen, "Where words fail, music speaks." Thank you for continuing to value the importance of music education and provide a voice to many students in the Berkshires. I look forward to sharing the Berkshire Music School's 2021-2022 achievements with you in this report.

Warmly,

A handwritten signature in blue ink that reads "Natalie Johnsonius Neubert". The signature is fluid and cursive.

Natalie Johnsonius Neubert
Executive Director

INCLUSION, DIVERSITY, EQUITY, AND ACCESSIBILITY STATEMENT

“Music is a moral law. It gives soul to the universe, wings to the mind, flight to the imagination, and charm and gaiety to life and to everything.” –Plato

In addition to the inherent sense of joy and camaraderie that music provides, studies show that music enhances confidence, community engagement, discipline, as well as improve cognitive and psychosocial development at all ages. Additionally, making music offers a unique opportunity for self-expression allowing individuals to articulate their identity in a visceral manner. The Berkshire Music School recognizes that no one type of musical expression inspires everyone, and we endeavor to offer courses, teaching styles, and performances that represent the myriad of musical voices present throughout our community.

Diversity is an integral part of making music, and the Berkshire Music School is committed to providing a supportive, multicultural environment that is welcoming to everyone without bias toward any race, color, nationality, ethnicity, religion, disability, age, sex, gender identity, gender expression, sexual orientation, or socio-economic group. We are dedicated to creating an accessible, inclusive, and supportive artistic home for all who wish to participate. We seek to strengthen our understanding of issues concerning inclusion, diversity, equity, and accessibility through educating our staff, faculty, and board of trustees; listening to stakeholders within the organization and in our community; and addressing the evolving needs of our community through diverse and engaging artistic programming.



2021–2022 FACULTY MEMBERS

Dave Bartley, *piano*

Gregory Boover, *outreach*

Carl Bowlby, *piano*

Sherri James Buxton, *voice*

Beth Craig, *cello*

Abby Daggett, *voice & outreach*

Alexander Davis, *bassoon*

Marjorie Dix, *voice*

Alison England, *voice*

Ouisa Fohrhaltz, *violin & viola*

Mark Franklin, *outreach*

Justin Geyer, *piano*

Paul Green, *clarinet*

Annabelle Hoffman, *cello*

Emily Chin Johnson, *piano*

Bing Liu, *violin*

Allen Livermore, *saxophone & jazz*

Mary Jo Maichack, *outreach*

Bonnie McCubbin, *piano & violin*

Robin O'Herin, *outreach*

Ashley Paradis, *clarinet*

Daniel Pena-Ariel, *piano, voice, & outreach*

Amy Renak, *piano*

Tari Wheeler Roosa, *flute & recorder*

Julia Rouse Shippee, *guitar & ukulele*

Alexander Sovronsky, *octave mandolin*

Alice Spatz, *double bass,
sight-singing, & theory*

Keith Spencer, *voice*

Paul Sundberg, *trumpet*

Jonathan Suters, *guitar & percussion*

Pete Sweeney, *percussion*

Norman Thibodeau, *flute & theory*

Jim Wojtaszek, *guitar*

FACULTY AND STAFF

OUR FACULTY

Hold advanced degrees from:

Berklee, Tufts University, Cambridge College, University of Michigan, Bennington College, Manhattan School of Music, Curtis Institute of Music, Kent State University, U-Mass Amherst, Ithaca College, Julliard, Wesleyan University, University of Colorado, Peabody Conservatory, University of Nebraska, and University of California Los Angeles

Have performed with:

Broadway shows, New York Philharmonic, Metropolitan Opera, American Symphony Orchestra, Mostly Mozart Festival Orchestra, Kennedy Center Honors, Tanglewood Music Center, Lower Merion Symphony Philadelphia PA, Miami City Ballet Orchestra, Orquest Sinfonica del Estado de Mexico, Shakespeare & Company, NBC, ABC, CBS, 20th Century Fox, and feature films

Range of instruments:

Baritone Horn, Bassoon, Cello, Clarinet, Classical Piano, Cornet, Double Bass, Electric Bass, Electric Guitar, Flute, French Horn, Guitar, Jazz Piano, Keyboard, Oboe, Percussion, Recorder, Saxophone, Sight-singing, Solfege, Songwriting, Theory/composition, Trombone, Trumpet, Ukulele, Viola, Violin, Voice

DURING 2021–2022, BMS WELCOMED THE FOLLOWING NEW FACULTY MEMBERS



Gregory Boover

Gregory Boover is an actor, musician, educator and artist. He has performed in many venues across the east coast, including WAM Theatre, Emergent Ensemble Theatre, The Theater at Monmouth, Looking Glass Theatre, Urbanite Theatre, the rig, The Theater at Woodshill, Berkshire Playwrights Lab, Hampshire Shakespeare Company and Shakespeare & Company in Lenox, where he has music directed, composed, professionally trained and taught in the education programs. Greg holds a BA in Theatre from UMass Amherst and studied at the University of Kent in Canterbury, England. Find out more at www.gregoryboover.com.



Carl Bowlby

Carl Bowlby has played the piano most of his life and is a June 1990 graduate of the then Pittsfield Community Music School (now Berkshire Music School). He went on to study piano performance, composition and recording studio technology at New York University, from which he graduated in May of 1995 earning a B.A. from the Gallatin School of Individualized Study. Since then, Carl studied the pipe organ locally and has been playing in churches since the late 1990's. He has also taught and performed in the Berkshires including playing musical theatre at the local high schools, the Mac-Haydn Theatre in Chatham, NY and Barrington Stage Company. Carl is thrilled to be a part of the Berkshire Music School and looks forward to teaching piano and organ to all eager students!



Abby Daggett

Abby Daggett is a musical theatre artist, opera singer, director, music and vocal instructor. She has trained in voice, acting, and dance. For the past six years, she has focused on specialized vocal training, specifically the Bel canto method and Linklater technique. Abby is best known for her acting work across performance mediums like musical theatre, straight plays, and opera/classical performance. As a leading lady, she has performed roles in a variety of pieces, including Susanna in *The Marriage of Figaro* and Charity in *Sweet Charity*. She is also passionate about directing, music and vocal instruction. As a voice and music teacher, she inspires those just starting out to share and create empathy through their performances. Abby is a resident of the Berkshires and Boston and has dual degrees in music and theatre from the Massachusetts College of Liberal Arts.



Bing Liu

Bing Liu is a graduate of Boston Conservatory of Music. Bing began her musical career in China, winning prestigious violin competitions at the age of 14. She went to Central Conservatory of Music in Beijing China and Boston University. She performed with the first China Youth Symphony Orchestra Goodwill and Friendship Tour Europe with over 15 European stops in 1987, the first time in Chinese history, and second time 1988. She worked at the Central Opera Theatre Symphony Orchestra for ten years. In addition to BMS, Bing teaches at Miss Hall's School and Suzuki Music School of Troy, New York. She is co-founder of the Berkshire Trio and plays in the Berkshire Symphony.



Ashley Paradis

Ashley Paradis is currently the Band Director at Pittsfield High School in Pittsfield, Massachusetts. She directs the PHS Concert Band, Jazz Big Band and Jazz Combos. In addition, she teaches AP Music Theory and four music elective courses; Music Appreciation, Introduction to Guitar, World Drumming and Introduction to Music Theory. Prior to her position at Pittsfield High School, Ashley attended the University of New Hampshire with a Masters of Arts in Conducting (2017) where she served as an assistant to the UNH Wildcat Marching Band, Wind Symphony, Symphony Orchestra, Symphonic Band and Concert Band. In 2015, she received her Bachelors of Music in Music Education also from the University of New Hampshire. In addition to her teaching position, Ashley is very involved within the MMEA-WD, where she is currently serving as Chair-Elect. In past years she has served as the Assistant Concert Band Manager for the Senior Festival (2019), as well as Manager for the Concert Band (2020).



Julia Rousse Shippee

Julia Rousse Shippee sings and plays many string instruments, including the upright bass, guitar and ukulele. She taught elementary general music for 17 years and recently received a MM in Music Education from the University of Florida. Her favorite thing to do as a teacher is connect with students and find out what their personal interests are and then work that into the lessons. Julia is very excited to be joining the BMS community and looks forward to sharing her love of music with the students here.



Jonathan Suters

Jonathan Suters began studying music at the age of nine: first on violin, and then piano, double bass, classical guitar, tuba, and trombone. His guitar teachers include Ed Flower (of Ithaca College) for 4 years, Richard Provost (Chair of guitar dept. at Hartt School of Music) for 2 years, and, most recently, Ben Verdery (Yale Guitar Masters program director) for continued study of technique and interpretation. Jon's primary instrument is classical guitar, but with a strong secondary focus on upright and electric bass. Jon has been able to stretch in virtually every musical direction: with both jazz and classical roots in his private studies, he has worked with many musicians across genres and disciplines. Artists he has performed with include James Taylor, Charles Neville, Dr. John, Paul Halley, Sonya Kittchell and many music industry giants including Ed Mann, Chad Wakerman, Horacio Hernandez, Larry Goldings, and Owen Young. Jon has taught at many schools and institutions in the region, including Berkshire Country Day School, Salisbury School, Indian Mountain School, Richmond School, Austen Riggs Center, Simons Rock College, and Flying Cloud Institute. Jon has also performed with Barrington Stage Co., Albany Pro Musica, Halifax Cathedral Choir, and Taft School Choir. He performed recently at the Kaufman Center Musical Storefronts Series with Dashon Burton, winner of the 2021 Grammy Award for best classical solo vocal album. Jon lives in New Marlborough with his wife, 5 children, and a bunch of pets. When not playing a musical instrument, he can usually be found on a bike somewhere in south county Berkshires.

BMS STAFF

Natalie Johnsonius Neubert, *Executive Director*

Jim Wojtaszek, *Operations Manager*

Sandy Moderski, *Registrar*

Cassie Pearson, *Marketing Manager*

Sherri James Buxton, *Outreach Coordinator*

Pam Knisley, *Special Projects Coordinator*



BMS OUTREACH AND COMMUNITY PROGRAMS

Berkshire Music School's active outreach program brings musical enrichment to underserved students throughout the community during in-school and after-school courses, offered both in-person and online. Our teaching artists also work closely with senior centers, libraries, museums, and other community organizations in order to provide concerts, interactive workshops, small group lessons, and more.

Throughout the 2021-2022 school year the Berkshire Music School's Outreach and Community Programming continued to be very active. Due to COVID-19 restrictions BMS was able to adapt our programs for both in-person and online scenarios to meet the needs of our community partners.



AFTER-SCHOOL PROGRAMS

Robin O'Herin taught virtual ukulele lessons for grades 3rd–6th at Williamstown Elementary School and grades 2nd–4th at Lee Elementary School. Greg Boover taught 4th–6th graders in-person at Hoosac Valley Middle School in Adams and 3rd–5th graders at Richmond Consolidated School.

Abby Daggett taught children in kindergarten through 2nd grade with her program, "Creation Station: A Musical Puppetry Workshop." The class combined hands-on puppet making with musical activities that culminated in an original performance. These sessions were held remotely for Craneville School, Kittredge School, Becket Washington, Williamstown School, and in-person at Lanesborough Elementary School.

In addition, BMS provided free after-school ukulele classes in Pittsfield for Morningside, Conte and Herberg Middle School. In the spring we also added ukulele workshops at Muddy Brook and W.E.B. DuBois schools in Great Barrington through their 21st century grant program, Project Connection.



ASSEMBLIES

BMS offered an "All That Jazz: A History of Jazz" assembly to schools. Students in grades 3rd–5th learned about the history of jazz music and the importance of this musical genre as the first American musical art form. To help the students make connections between music and social studies, immigration, European and African culture were discussed as they relate to the creation of jazz. A six-piece band of professional musicians was recorded live at the Berkshire Music School as they played examples of New Orleans jazz, ragtime, blues, and swing music from the big band era. The musicians consisted of Bob Shepherd, Jack DiNicola, Jon Suters, Geoff Cunningham, Charlie Tokarz and Sherri James Buxton. Each spoke about their individual instruments. This interactive assembly, created and facilitated in real-time by Sherri James Buxton, taught students about improvisation and syncopation through movement and activities. The multi-media program was presented via zoom at Williamstown Elementary School, Hoosac Valley Middle School, Lanesborough Elementary School, Craneville School, Kittredge School, Becket Washington School, Lee Elementary School, Richmond Consolidated and Muddy Brook.



COMMUNITY COLLABORATIONS

BMS provided ukulele lessons for the Berkshire Children's Chorus. The children sang and played ukulele during their annual spring concert.

In all, our outreach programs brought musical enrichment programs to over 1,200 children.

SENIOR ACTIVITIES

BMS collaborated with 89 South (a division of Berkshire Place) to do a community drum circle with Otha Day.

BMS also partnered with OLLI, the Osher Lifelong Learning Institute to present the Cabaret Workshop class with faculty member, Sherri James Buxton.

BERKSHIRE COUNTY ARC PARTNERSHIP

For Berkshire County ARC, BMS provided bi-monthly music for 2 residences, Elm Street and Lakeway. Mark Franklin gave bi-weekly musical performances in person at the Lee CFD day program which alternated with the Nu Opps brain injury day program. In the summer of 2021 Otha Day facilitated a drum circle and Mark Franklin played guitar under the BMS tent for the Berkshire County Arc family support group.

BMS outreach programs are generously supported by grants from: Berkshire Life Charitable Foundation, the Lenox Educational Enrichment Fund, Lee Educational Enrichment Fund, Seven Towns Fund, Richmond Educational Enrichment Fund, Lanesborough Initiative for Education Enrichment, Adams Cheshire Partnership and Williamstown Elementary School Endowment of the Berkshire Taconic Community Foundation. Additional support is provided by the Cultural Council of Northern Berkshire, Alford- Egremont, Becket, New Marlborough, Dalton, Hinsdale-Peru, Great Barrington, Sheffield, Stockbridge, Washington, Richmond and Lee Cultural Councils, local agencies which are supported by the Mass Cultural Council, a state agency.





2021–2022 GROUP CLASSES

BMS’s Community Group Class program is designed to engage the widest swath of those interested in music education, regardless of their background, experience, financial circumstances, or musical aspirations. All classes are offered on a pay-what-you-can basis.

ADULT CLASSES

Adult Piano Class

Intergenerational Chamber Music

Cabaret Workshop

NEW – BMS String Orchestra, a performance ensemble for intermediate to advanced string players of all ages.

YOUTH CLASSES

Tunes for Tots, an intro to music for ages 1.5 – 4 years with a caregiver.

Music for Young Minds, a musical exploration for ages 5 – 7 years.

Música para las Mentes Jóvenes, introducción a la musica para niños de 3 a 7 años.

Youth Beginning Piano

Youth Beginning Guitar

NEW – Allegro, a performance ensemble for beginning string players.

NEW – Magic Violins, a Suzuki-based violin class for ages 3 – 6 years.

NEW – Puppetry Workshop: Danse Macabre and Nutcracker Suite

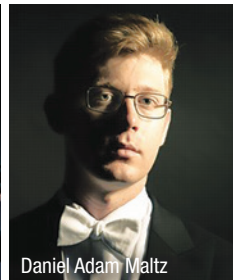
NEW – Opera Kids: The Magic Flute

NEW – Summer Youth Program: Adventures in Music, a summer youth intensive for ages 5 – 9 years.

MASTERCLASSES

Guitar with Jennifer Batten,
February 5, 2022

Fortepiano with Daniel Adam Maltz,
May 15, 2022



BMS Community Group Classes were generously supported by: the Feigenbaum Foundation, Golub Foundation, Adams Community Bank, the Rotary Club of Pittsfield, and the Pittsfield Cultural Council, a local agency that is supported by the Mass Cultural Council, a state agency.

STUDENT PERFORMANCES

HALLOWEEN RECITAL

October 23, 2021

CABARET WORKSHOP

November 29, 2021

May 2, 2022

INTERGENERATIONAL CHAMBER MUSIC

November 20, 2021

May 14, 2022

June 4, 2022

BMS STRING ORCHESTRA WITH MISS HALL'S SCHOOL ORCHESTRA

December 10, 2021

HOLIDAY RECITAL

December 18-19, 2021

VALENTINE'S RECITAL

February 12, 2022

BMS STRING ORCHESTRA WITH ALLEGRO

June 3, 2022

SPRING RECITAL

June 11, 2022

STUDENT RECITALS

LYNN FESTA, *voice*,

accompanied by Michael Nancollas

Student of Keith Spencer

April 23, 2022

KEELY ROSE O'GORMAN, *voice*,

accompanied by Tracy Wilson

Student of Sherri James Buxton

May 18, 2022

BRONWYN DIX, *piano*, with MORGAN DIX, *violin*

Students of Amy Renak, *piano*, and Ouisa Fohrhaltz, *violin*

May 22, 2022

ARI CAINE, SAGUN MEESALA,

SARAH KUNZMANN, and EMILY DUPUIS, *flute*

Students of Tari Wheeler Roosa

June 7, 2022

ZOE-RUTH BRIZAN and ARTOIS SANCHO, *piano*

Students of Amy Renak

June 7, 2022



PRIVATE LESSONS AND SCHOLARSHIPS

PRIVATE LESSONS

Private lessons are the core of all BMS programs. Lessons may be arranged for 30, 45, or 60 minutes each week to meet the needs of the individual student and are offered throughout the year.

2021-2022 SCHOLARSHIPS

Berkshire Music School offers generous scholarships to our most talented students as well as need-based financial aid for students who would otherwise be unable to participate in music education.

Students accepted into BMS Talent & Merit Scholarship Program benefit from: generous financial assistance (up to 100% tuition); invitations to participate in masterclasses with guest artists; audition coaching and workshops; complimentary tickets to performances at BMS and other venues; and performance opportunities throughout the Berkshires including individual and group recitals.

During 2021–2022, Berkshire Music School distributed \$24,898 to 22 students ranging from 5 – 92 years, including the following talent- and need-based awards:

- Dr. Edgar B. Taft Memorial Scholarship
- Jan and Marjorie Stocklinski Memorial
- William Arthur “Billy” Kent Memorial Scholarship
- The Chopin Scholarship
- The Paderweski Scholarship
- Roland and Eileen Sundberg Memorial Scholarship
- Moe England / Scott Family Fund
- Helen and Milton Fink Scholarship
- Gia Cox Caird Memorial Scholarship Fund
- Tracy R. Wilson Scholarship
- Franklin and Carolyn Pillsbury Scholarship
- Frederick and Rosalyn Cohen Scholarship
- Paul B. Nixon Memorial Scholarship
- Greylock Federal Credit Union Scholarship
- Marion Maby & Sai Chang Scholarship
- Jason Marcus Scholarship
- Matthew Rich Scholarship
- Winnie Davis Crane Memorial Scholarship
- Daniel Pearl Scholarship
- Keith Shaefer Wells Memorial Scholarship
- Dale Ott Memorial Scholarship
- Peter M.N. Tague Scholarship
- Paul Houston Memorial Scholarship
- Gertrude Robinson Smith Scholarship
- Grace Manning Scholarship

STUDENT SPOTLIGHT

HELEN & MILTON FINK SCHOLARSHIP RECIPIENT: QUENTIN ARTOIS SANCHO

Student Quentin Artois Sancho, recipient of the Helen and Milton Fink Scholarship, has been taking lessons at the Berkshire Music School for five years. His favorite part about the piano is “exploring different compositions of piano playing.”

As a dedicated student, Artois enjoys “conversing and learning” with his teacher, Amy Renak. He believes the best piece of advice he has received from his teacher is, “Don’t give up, kid!” Artois’ favorite music experience was being able to perform at the Berkshire Immigrant Center, where he says, “It was so nice meeting new people.”

To Artois, receiving the Helen and Milton Fink Scholarship meant that he could “continue learning and expanding my musical knowledge, and sharing it with the community.” In the future Artois hopes to be a musician, doctor, or computer scientist.



BMS’s scholarship program is supported by the England / Scott Family Fund of the Berkshire Taconic Community Foundation, and the generosity of our individual donors.

HONORING THE FINK FAMILY

Helen and Milton Fink were both true champions of the arts. Their daughter, Judy Fink, describes her parents as “Active, vibrant and engaged people - as a couple and as individuals. They never did anything half-heartedly and devoted themselves to serving their community (and the world) for most of their very long and full lives.” Whether attending Young People’s Concerts at Carnegie Hall, seeing Leonard Bernstein conduct the NY Philharmonic, or singing folk songs around their father’s pride and joy - the Steinway baby grand - music remained a very important part of the Fink Family’s lives.

Judy notes that Milton’s career “Focused on music - teaching high school chorus and orchestra, supervising other music teachers, playing in gig bands to earn extra money to support the family, arranging Jewish liturgical music and conducting synagogue choirs.” After he and Helen, who was an elementary school guidance counselor, retired, Judy notes that music was the reason her parents moved to the Berkshires from New York City. They volunteered their time at arts organizations like BMS, Tanglewood, and Jacob’s Pillow. They both attended BMS recitals and concerts, and Milt showcased his woodworking skills by building bookcases still used in some of the studios today.

When Milt passed away in June of 2021, Helen, along with her children, “Wanted to honor his memory by nurturing a young musician, which was what he did for his entire life.” The Fink Family endowed a yearly scholarship to support a BMS student, named after both Milton and Helen, who passed just six weeks after Milt. Judy remarks, “Instead of holding a funeral for our parents, we celebrated them with a chamber music concert at the BMS, with music performed by several of Milt’s chamber music colleagues.”

In June 2022, Helen and Milton’s children, along with their spouses, met Artois Sancho, the first recipient of the Helen and Milton Fink Scholarship at the spring recital. Judy said, “Artois is a gifted young man and he made music magic that evening. Our parents would have been proud.”



The tie clip Milton wore regularly as a music teacher and administrator.



PROFESSIONAL PERFORMANCES

As the third pillar of our mission, BMS proudly hosts a multitude of professional performances including in-house recitals, concerts, and offsite performances to promote musicians throughout the Berkshires.

Performances at BMS represent a broad spectrum of musical genres, including but not limited to classical, jazz, world, popular, cabaret, and contemporary/new music. To further serve the youngest music lovers, BMS expanded the series to include performances that are geared toward children and youth. Lastly, to reach more diverse audiences, BMS produces public performances at partnering venues throughout the Berkshires and pay-what-you-can and complimentary tickets are available for all our regular, public performances.

GLOBAL VOICES FESTIVAL

Music @ The Taft presented our Global Voices Festival in the summer of 2021 featuring the myriad of musical voices that make up the Berkshires' cultural scene. This two-weekend event featured performances from:

Mukana, August 27, 2021

This eight-piece band fused together a unique combination of Zimbabwean, Haitian, Chilean and other Latin American traditions, topped off with some fiery jazz improvisation.

Mukana Jr., August 28, 2021

Fun and interactive music for kids from Zimbabwe, Latin America and beyond with guitarist Jason Ennis, Chilean singer Natalia Bernal, and Zimbabwean singer/songwriter/multi-instrumentalist Tendai Muparutsa.

Otha Day Drum Circle, August 29, 2021

Renowned musician Otha Day facilitated this fun and lively hands-on experience designed for all ages.

Berkshire Jewish Musicians Collective, September 3, 2021

An evening of musical inspirations, featuring the many roots and branches of Jewish music.

Japanese Koto, September 4, 2021

BMS faculty member Daniel Pena-Ariel presented a family-friendly performance of songs and techniques on the Japanese Koto.





MUSIC @ THE TAFT

Mary Jo Maichack, November 7, 2021, *musical storytelling for all ages.*

Alison England, November 20, 2021, *a cabaret performance, accompanied by Tracy Wilson.*

Wintergreen, December 11, 2021, *contemporary and traditional music from America and the British Isles.*

Daniel Pena-Ariel, April 23, 2022, *piano, saxophone, and Japanese koto.*

MUSIC @ THE TAFT PRESENTS LIVE ON THE LAWN

Mary Jo Maichack, May 21, 2022, *musical folktales from around the world.*

Rees Shad & The Conversations, June 3, 2022, *swinging blend of jazz, folk, and blues.*

Terry A La Berry & Friends, June 4, 2022, *song and dance for children and their families.*

Mary Jo Maichack, June 11, 2022, *interactive concert of songs for summer.*

Susan Dillard and Dave Bartley with Dan Broad, June 12, 2022, *jazz, rock, country, and blues.*

Mukana, June 17, 2022, *a joyful celebration of our global community.*

CONCERTS FOR COLLABORATIONS

In addition to concerts produced at BMS, we joined our community partners for a variety of collaborative concerts, including the Lenox Loves Music series presented in collaboration with the Lenox Cultural District and the Lenox Chamber of Commerce. BMS faculty members were also featured in concerts at Ventfort Hall in Lenox, celebrating the return of the fully restored 1895 Steinway Rosewood piano that was original to the historic home. On November 7, 2021, pianist Amy Renak performed songs from the Bowery and Ragtime with a bit of audience participation for a music step into the Gilded Age. On December 19, 2021 voice faculty Sherri James Buxton, with accompanist Bob Shepard, sang a holiday cabaret with seasonal music mixed with Broadway classics and favorites from the Great American Songbook.

BMS professional performances are supported by the generous support of: the Feigenbaum Foundation, Greylock Federal Credit Union, the Mass Cultural Council, and the Lenox Cultural Council, a local agency that is supported by the Mass Cultural Council, a state agency.

SPECIAL EVENTS

BERKSHIRE MUSIC SCHOOL'S 80TH ANNIVERSARY GALA

Our 80th Anniversary Gala took place on Sunday, September 26, 2021, at Wyndhurst Manor & Club in Lenox. BMS welcomed 115 friends to an evening that featured a silent auction of products and experiences from community businesses, delicious dinner, and a live performance by Grammy Award-winning pianist, Emanuel Ax. The evening commenced with the presentation of the first inaugural Tracy R. Wilson Scholarship to senior Keely Rose O'Gorman, who will be attending Harvard University after graduation. The event raised over \$100,000, with all proceeds allocated for the Berkshire Music School's mission of fostering the love and pursuit of music for all ages through quality music education activities, community collaborations, and performance opportunities.

Special thank you to our Gala sponsors

Gold Sponsors

Christine Condaris, Ph.D. & Jimmy Ruberto
David Neubert
Lynn Festa & Michael Nancollas
Claudia Perles & Gerry Fultz

Silver Sponsors

Douglas & Barbara Brand
Michael & Shawn Leary Considine
Cindy Hashim
Jim & Joan Hunter
David & Jennie Jadow
Francis X. Spina & Palma Fleck

Benefactors

Anonymous (3)
Cecylia Arzewski & Dr. Paul R. Lennard
Lisa M. Avery
Kate Barton & Sam Craig
Dr. Richard & Kate Basile
Sydelle & Lee Blatt

Jeannene Booher
Lou Boxer
Jeffrey & Dr. Marcella Bradway
Linda Cantoni
Karen Cellini & Joe Corcoran
Quentin Chin
Jeffery & Judith Cook
Allan Dean & Julie Shapiro
Kelley DeLorenzo
Janet & John Egelhofer
Dr. Michael & Kathleen Fabrizio
King Francis
Linda & Kinney Frelinghuysen
Jean & Paul Garvey
Paul & Lisa Green
Ellen & Scott Hand
Sheila Keator
William & Karen Ketcham
Lauren Publishing Co.
Dick Lipton & Jean Jones
Marile Lynch

John & Jackie McNinch
Melissa Miller
Lyndon Moors & Joan Devoe
Mindi Morin & Max Scherff
Andrea Pecor
Margaret Poutasse
Marianna Poutasse
Cris Raymond
Philip Rich
Ingrid Richardson
Laura Rosenthal
Georgeanne & Jean Rousseau
Adrienne Silverstein
Alice & Larry Spatz
Paul & Lenore Sundberg
Lutitia B. Tibbetts
Stephen Tournas
Abbie von Schlegell
Dr. Natalya & Sergey Yantovsky
Richard Ziter, MD & Eric Reimer





DANIEL ADAM MALTZ AT WHEATLEIGH

BMS traveled back to the Gilded Age for a benefit cocktail party and concert by Vienna-based fortepianist Daniel Adam Maltz. Drawing on Mr. Maltz's training at the Royal Academy of Music in London and at Vienna's University for Music and Performing Arts, the afternoon featured the work of Haydn and Mozart on a historic fortepiano in the exquisite setting of Wheatleigh's Great Hall. All proceeds went towards the BMS need-based financial aid program.

Special thank you to our event donors

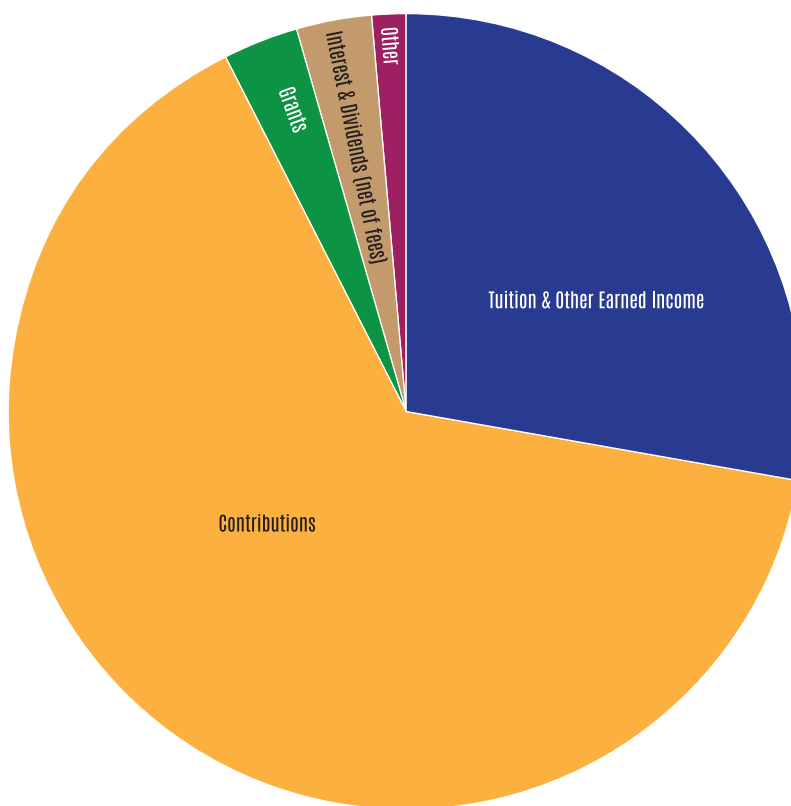
Anonymous	Thomas S. Hayes
Cecylia Arzewski	Dr. Ed & Cindy Helitzer
Lisa M. Avery	Joan & Jim Hunter
Kate Barton & Sam Craig	William & Karen Ketcham
John Bissell	Richard Lipton & Jean Jones
Tim & Judy Boomer	Kristen D. & David Mackey
Jeffry & Marcella Bradway	David Neubert
Maria & Laurel Caluori	Andrea & Elena Nuciforo
Deborah & Daniel Carter	Amy Renak
Karen Cellini	Philip Rich
Christine Condaris, Ph.D.	Laura Rosenthal
Allan Dean	Linda M. Ruberto
Robert & Gretchen Dix	Barrie Sardoff Roman
Evan & Kit Dobbelle	Cynthia Spinola-Hashim
Jean & Paul Garvey	Jerry & Nancy Straus
Paul Green	Paul & Lenore Sundberg
Ellen & Scott Hand	Jonthan Swartz
Cynthia Hashim	

FINANCIAL OVERVIEW

FOR THE YEAR ENDED JUNE 30, 2022

REVENUES, GAINS, AND OTHER SUPPORT

Tuition & Other Earned Income	\$	240,559
Contributions		559,091
Grants		25,574
Interest & Dividends (net of fees)		27,221
Realized & Unrealized Gain (Loss) on Securities		(137,792)
Other		10,200
TOTAL REVENUE, GAINS, AND OTHER SUPPORT	\$	724,853



EXPENSES

Program Expenses	\$	218,818
Fundraising		49,596
General & Administrative		389,619
TOTAL EXPENSES	\$	658,033

CHANGE IN NET ASSETS	\$	66,820
NET ASSETS BEGINNING	\$	843,867
NET ASSETS ENDING	\$	910,687

THANK YOU

Founded by Winnie Davis Long Crane in 1940, the Berkshire Music School has an eighty-year history of bringing edifying musical experiences to the community thanks to contributions by people like you.

BMS extends our most sincere gratitude to our 2021–2022 institutional and individual donors for helping spread the joy of music throughout the Berkshires.

FY 2022 DONORS

\$25,000+

Josephine & Louise Crane Foundation, Inc.
The Feigenbaum Foundation, Inc.
Mass Cultural Council

\$10,000-\$24,999

Anonymous (2)
Berkshire Life Charitable Foundation
David Fink, in memory of Helen and Milton Fink
Jesse Fink, in memory of Helen and Milton Fink
Judy Fink & Rob Freeberg, in memory of Helen and Milton Fink
Claudia Perles & Gerry Fultz

\$5,000-\$9,999

Anonymous
Christine Condaris, Ph.D.
Jeffrey Davis & Michael Miller
Lynn M. Festa & Michael P. Nancollas
Natalie & David Neubert
Charles H. Hall Foundation
Kaiser Charitable Gift Fund
Jerry & Nancy Straus

\$2,500-\$4,999

Adams Cheshire Educational Partnership of the Berkshire Taconic Community Foundation
Jeffrey & Marcella Bradway
Douglas & Barbara Brand
Lynn A. Calpeter
Considine-Leary Family, a donor-advised fund
Cultural Council of Northern Berkshires, a local agency that is supported by the Mass Cultural Council, a state agency
Greylock Federal Credit Union
Cynthia Hashim
Jim & Joan Hunter
Jennie & David Jadow
The Ruth Krauss Foundation
Laurin Publishing
Ronald & Lynette Mason
Laura Rosenthal
Fran Spina & Palma Fleck
Y'Diyah Fund of the Berkshire Taconic Community Foundation

\$1,500-\$2,499

Karen Cellini & Joe Corcoran
England/Scott Family Fund of the Berkshire Taconic Community Foundation
Ellen & Scott Hand
Len Nero, in memory of Helen & Milton Fink
Pittsfield Cultural Council, a local agency supported by the Mass Cultural Council, a state agency
C.C. Raymond
Philip Rich
Rotary Club of Pittsfield
Paul & Lenore Sundberg
Williamstown Elementary School Endowment Fund of the Berkshire Taconic Community Foundation

\$750-\$1,499

Anonymous
Andante Fund
Cecylia Arzewski & Dr. Paul Lennard
Lisa M. Avery
Casablanca
Dalton Cultural Council, a local agency supported by the Mass Cultural Council, a state agency
Allan Dean & Julie Shapiro
Evan & Kit Dobelle
Janet & John Egelhofer
Linda & Kinney Frelinghuysen
Malcolm Gibbs Foundation
Ann & Peter Herbst Foundation
Hinsdale-Peru Cultural Council, a local agency supported by the Mass Cultural Council, a state agency
Edmund & Vickie Hornstein
William & Karen Ketcham
Lanesborough Initiative for Excellence Fund of the Berkshire Taconic Community Foundation
Lee Educational Enrichment Fund of the Berkshire Taconic Community Foundation
Dick Lipton & Jean Jones
Lyndon Moors
Catherine Murphy, in memory of Helen & Milton Fink
Andrea & Elena Nuciforo
Ingrid Richardson

BMS 2021–2022 BOARD OF TRUSTEES

Christine Condaris, PhD., *President*

Jeffrey Bradway, *Vice President*

Lisa Avery, *Secretary*

Cindy Hashim, *Treasurer*

Cecylia Arzewski

Karen Cellini

Lynn Festa

Darci Hess

William Ketcham

Lyndon Moors

Ellen Cooper Shanahan, Ph.D.

John Sinopoli

Paul Sundberg

Jerry Straus

Jim Wojtaszek

ADVISORY BOARD

Otha Day

Lacy Florentino-Consolini

Bridget Rigas

Mark Schwartz

Natalie Johnsonius Neubert,
Executive Director

Richmond Educational Enrichment Fund of the
Berkshire Taconic Community Foundation
Rosin the Beaux, Dale Ott Scholarship Fund
Karen & Jeff Ross
Georgette & Jean Rousseau, in honor of Tracy Wilson
Max Scherff & Mindi Morin
Seven Towns' Educational Partnership of the
Berkshire Taconic Community Foundation
Ellen Cooper Shanahan
Lutitia Tibbetts
Richard Tibbetts
Thomas Wojkowski
Sergey & Dr. Natalya Yantovsky

\$250-\$749

Anonymous
Adams Community Bank
Warren Adams, in memory of Helen & Milton Fink
Alford-Egremont Cultural Council, a local
agency supported by the Mass Cultural
Council, a state agency
The Andersen Family-Sharon, Kathryn, Eric & Patrick
Kate Barton & Sam Craig
Kathleen & Richard Basile
Becket Cultural Council, a local agency supported
by the Mass Cultural Council, a state agency
Patricia Belden & Kevin Kelly
Lee N. Blatt
Kelly Blau
Jeannene Booher
Tim & Judith Boomer
William & Gail Bouck
Lou Boxer
Carl & Stephanie Bradford
Daniel & Joan Burkhard
Sherri James Buxton
Linda Cantoni
Marietta Rapetti Cawse & James Cawse
Quentin & Amy Chin
Jeffrey & Judith Cook
Kelley DeLorenzo
Robert Dix
MJ Downing
Molly & Mark Elliot
Michael & Kathleen Fabrizio
Lacy Florentino-Consolini
King & Debbie Francis
Barbara Freeberg, in honor of Helen & Milton Fink
Adaline Frelinghuysen
John Galt
Jean & Paul Garvey
John Gillespie
The Golub Foundation

Elizabeth & Jesse Goodman
Susan Gordon
Great Barrington Cultural Council, a local
agency supported by the Mass Cultural
Council, a state agency
Paul Green
Michael Hashim & Cynthia Spinola-Hashim
Thomas S. Hayes
Darci Hess
Alice & Roy Houston, in memory of Paul
Houston
James Hughes
Robert Josell
Howard & Susan Kastner
Sheila Keator
Kushi & Company
Martin Langeveld, Pearl Scholarship Fund
Lee Cultural Council, a local agency supported
by the Mass Cultural Council, a state agency
Nan & Allan Lipton
Marile Lynch
Marion Maby
Al Marmor
John & Jackie McNinch
Melissa Miller
Cindy Curtis Nelson
Lynne & Clifford Nilan
Linda P. O'Connell
Jamie Ott, Dale Ott Scholarship Fund
Andrea Pecor
Laura Poquette
Marianna Poutasse
Margaret Poutasse
Amy Renak
Richmond Cultural Council, a local agency
supported by the Mass Cultural Council, a
state agency
Barrie Sardoff Roman
Linda Ruberto
Rosita Sarnoff & Beth Sapery
Adrienne Silverstein
Masha Slavin, in memory of Cindy Ogulnick
Alice & Larry Spatz
Jonathan Swartz
Judy Thompson
Laurel Touby & Jon Fine
Stephen Tournas
Abby von Schlegel
Shaun & Alissa Weigand
Richard M. Ziter, MD

\$100-\$249

Lawrence & Janet Ackerman

Paul & Karen Allmacher
David & Elizabeth Avery
Lucy Bardo Harms
Barrington Stage Company
Mary Ann Bascom
Frank Battista
Melissa & John Bissell
Judith Bookbinder
Michael Bosworth, in memory of Helen & Milton Fink
Bronly & Sarah Boyd
Ed & Marge Bride
Mario & Laurel Caluori
William J. Cameron Jr.
Marvin Cech
Claudine M. Chavanne
Michael & Elaine Christopher
Chris Ciehanski, in memory of Paul Houston
James Ciullo
Sandra & Andrew Clarke
Joyce Zaorski Coffey
Noah Cook-Dubin
Kenneth Cushman
Andrew DeVries & Patricia Purdy
Ursula Ehret Dichter
Diana & Stanley Feld
Ronald Feldman & Elizabeth Morse
Ouisa Fohrhaltz
Paul Fortini, in memory of Cindy Ogulnick
Barbara Fox, in memory of Helen & Milton Fink
Susan Goodman
Elena & Desmond Green
Joanne & Thomas Hardy
Sarah Hart, in memory of Helen & Milton Fink
Jean & Walt Hayes
Johann Heffner, in memory of Helen & Milton Fink
Gregg Henegar
Nancy King, in memory of Cynthia Ogulnick
Richard & Joyce Lacatell
Yelena Levina
Miriam & Donald Lewis, in memory of Paul Houston
William Loeb
Jeffrey Lugert, in memory of Lillian Phillips
Adrienne Miesmer
Michael & Annette Miller
Jay Mortensen
Anthony Murad
Seth Nash, in memory of Cindy Ogulnick
New Marlborough Cultural Council, a local
agency supported by the Mass Cultural
Council, a state agency
Elizabeth Palucci
Sara Patella, in memory of Helen & Milton Fink

Carolina Perrone
 Robert Petricca
 Jessica Provenz
 Sharyn Pudvar, Dale Ott Scholarship Fund
 Janet Pumphrey
 Irwin T. Renak
 Peter Rentz, in memory of Cynthia Ogulnick
 Anne Rocheleau
 Charlene Rosen, in memory of Helen & Milton Fink
 Karen Sue Rositzke, in memory of Helen & Milton Fink
 James Ruberto
 Linda & Frank Russell
 James L. Sacksteder
 Bill & Kathy Schmalkucke, in memory of Helen & Milton Fink
 C. Schneider
 Farrah & Brian Schubmehl
 Carol & Stuart Schwartz, in memory of Cindy Ogulnick
 Marcie L. Setlow
 Sheffield Cultural Council, a local agency supported by the Mass Cultural Council, a state agency
 Christine Singer
 Anna Owens Smith
 Mark & Elisa Snowise
 Sally Soluri
 Jane Soudavar
 Mary Spina
 Doris Stevenson
 Stockbridge Cultural Council, a local agency supported by the Mass Cultural Council, a state agency
 Joe & Betsy Strauch, in memory of Helen & Milton Fink
 Jim Tober, in memory of Helen & Milton Fink
 Alissa VanZee-Phillips, in memory of Lilly Phillips
 Craig & Junior Vickers, in memory of Helen & Milton Fink
 Marlene Walt
 Amy Wang
 John Wheeler
 Tracy Wilson

\$50-99

Anonymous
 Christine W. Baldrige
 Jane Braus, in memory of Helen & Milton Fink
 Sharon Bodnar Briskman, in memory of Helen & Milton Fink
 Lynn Browne
 Maribeth & David Casey, in memory of Billy George
 Susan Code, in memory of Helen & Milton Fink

Fredric & Rosalyn Cohen
 Philip Coleman
 Joan Devoe
 Sarah Effron, in memory of Helen & Milton Fink
 Mary Beth & Scott Eldridge
 Leslie Fishbein, in memory of Helen & Milton Fink
 Joe & Ann Fiteni
 Ruth Lynn Frommer
 Camp & Comfort Gordiner
 Tana Gullotta, in memory of Helen & Milton Fink
 Shaun & Linda Harrison, in memory of Cindy Ogulnick
 Edwin & Cindy Helitzer
 Helen Hemendinger, in memory of Billy George
 Joseph & Maureen Hennessey
 Paul S. Herklotz
 Hill Engineers, Architects, & Planners
 Robert & Nancy Holdridge, in memory of Paul Houston
 Rebecca Hughes, in memory of Helen & Milton Fink
 Sheila Irvin, in memory of Cynthia Ogulnick
 Martin & Alice Jonas
 Herbert Kantor, in memory of Cynthia Ogulnick
 Sara LaJoie, in memory of Helen & Milton Fink
 Benjamin Liptzin, in memory of Helen & Milton Fink
 Carol L. Messerschmitt
 Nancy & Michael Miller
 Kathleen Pink, in memory of Cynthia Ogulnick
 Patricia Rosier, in memory of Cynthia Ogulnick
 John Sammel
 David Sharper
 Nancy Sheridan Kojima
 Joseph Sondrini & Stephen Sondrini, in memory of Paul Houston
 Carolyn Stevens, in memory of Helen & Milton Fink
 Timothy J. Sullivan Jr., in memory of Cynthia Ogulnick
 Barbara Syer
 Mary Ann Tighe, in memory of Helen & Milton Fink
 Catherine Torres, in memory of Helen & Milton Fink
 Liskin Van Pelt Dus

Under \$50

Anonymous
 Ronald Barron
 Alan Benjamin, in memory of Helen & Milton Fink
 Marcia Brolli
 Peter K. Calderella, in memory of Cindy Ogulnick
 Alex Carnevale
 Marianne & Tom Conklin, in memory of Cindy Ogulnick
 Linda & George Diehl
 Lorraine Feldman, in memory of Helen & Milton Fink
 Pamela Foster
 George & Susan Galli

Annette Gordon, Moe England Scholarship
 Mary Hoeltzel
 Mary & Christopher Horton, in memory of Cynthia Ogulnick
 Ken Hundert, in memory of Helen & Milton Fink
 Barbara Iwler, in memory of Paul Houston
 Jeff Ellis
 John Kowalski, PhD
 Don Kumba & Jane Silverman, in memory of Helen & Milton Fink
 Fred & Brenda Landes
 Edith LaSala
 Jeanette Liemer, in memory of Helen & Milton Fink
 David & Kristin Mackey
 William & Claire Mahoney, in memory of Billy George
 Mary & Mark Makuc
 David & Patricia Manion, in memory of Cynthia Ogulnick
 Frank & Maureen McHugh, in memory of Billy George
 Joyce & Peter Nelson, in memory of Lillian Phillips
 Lesley Oranski, in memory of Helen & Milton Fink
 Larry Pellish
 Carolyn Renzi, in memory of Cynthia Ogulnick
 Tarri Wheeler Roosa, in memory of Cynthia Ogulnick
 Gwen W. Sears, in memory of Helen & Milton Fink
 Barbara & Bruce Schickmanter, in memory of Cynthia Ogulnick
 Terry & Lois Weaver

We are also grateful to our many friends whose in-kind donations make a difference every year!

This list reflects donations made July 1, 2021 – June 30, 2022. If we inadvertently omitted your name or listed it incorrectly, please accept our sincere apologies and contact the BMS office at 413-442-1411.





W. Berkshire
Music SINCE 1940
School

30 Wendell Avenue | Pittsfield, MA 01201
www.BerkshireMusicSchool.org | 413-442-1411